

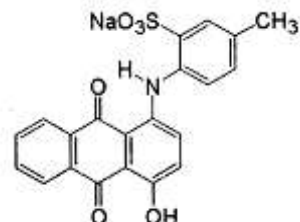
TECHNICAL DATA SHEET

Cosmetische kleurstof - waterbasis - violet / Cosmetic colorant - water based - violet - KCW10

DEFINITION

Chemical name sodium;2-[(4-hydroxy-9,10-dioxoanthracen-1-yl)amino]-5-methylbenzenesulfonate

INCI Name CI 60730
COLOUR INDEX 60730
CAS Nr 4430-18-6
EINECS Nr 224-618-7



REGULATIONS

EU Cosmetic Directive Annex IV, Part 1, Cat 3
Food Directive -----
FDA Ext DC Violet 2
JAPAN III Violet 401
CHINA Hygienic standard for cosmetics : Cat 3

Pure dye content	80% Min.
Water insoluble matter	0.4 Max.
Volatile matter	10% Max.
Chlorides and sulfates (as Na salts)	15% Max.
Heavy metals :	
Arsenic	< 2 ppm
Lead	< 20 ppm
Manganese	< 50 ppm
Chromium	< 50 ppm
Mercury	< 1 ppm
Cadmium	< 1 ppm

CHEMICAL & PHYSICAL PROPERTIES

Aspect	Bluish violet powder
Maximum absorption	568 (+- 5)
Fastness to acids	Good
Fastness to alcali	Good
Fastness to light	Good

FIELDS OF USE : All water based cosmetic products such as skin care, hair care, toiletries