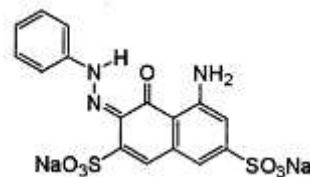


TECHNICAL DATA SHEET

Cosmetische kleurstof - waterbasis - roze / Cosmetic colorant - water based - pink - KCW09

DEFINITION

Chemical Name	Disodium 5-amino-4-hydroxy-3-(phenylazo)-naphthalene-2,7-disulfonate
INCI Name	CI 17200
COLOUR INDEX	17200
CAS Nr	3567-66-6
EINECS Nr	222-656-9



REGULATIONS

EU Cosmetic Directive	Annex IV, Part 1, Cat 1
Food Directive	-----
FDA	DC Red 33, allowed for coloring mouthwashes and toothpastes and externally applied cosmetics.
JAPAN	II Red 227
CHINA	Hygienic Standard for Cosmetics, Cat 1

Pure dye content	82% Min. (Japan : 85-101%)
Water insoluble matter	0.3% Max.
Volatile matter	6% Max.
Chlorides and sulfates (as Na salts)	10% Max.
Intermediates and subsidiary colors	Passes test
IR Spectrum	Passes test
Heavy metals :	
Arsenic	< 3 ppm
Lead	< 20 ppm
Manganese	< 50 ppm
Chromium	< 50 ppm
Mercury	< 1 ppm
Cadmium	< 1 ppm

CHEMICAL & PHYSICAL PROPERTIES

Aspect	Bluish violet powder
Maximum absorption	530 (+ 5)
Fastness to acids	Good
Fastness to alkali	Good
Fastness to light	Good

FIELDS OF USE : All water based cosmetic products such as skin care, hair care, toiletries