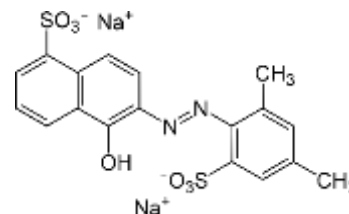


TECHNICAL DATA SHEET

Cosmetische kleurstof - waterbasis - rood/oranje (warm rood) / Cosmetic colorant - water based - red/orange (warm red) - KCW07

DEFINITION

Chemical name	3-(2,4-Dimethyl-5-sulfophenylazo)-4-hydroxynaphthalene-1-sulfonic acid disodium salt
INCI Name	CI 14700
COLOUR INDEX	14700
CAS Nr	4548-53-2
EINECS Nr	224-909-9



REGULATIONS

EU Cosmetic Directive	Annex IV, Part 1, Cat 1
Food Directive	-----
FDA	FDC Red 4
JAPAN	III Red 504

Pure dye content	87% Min.
Water insoluble matter	0.2 % Max.
Combined ether extracts	0.2 % Max.
Unulfonated primary amines	0.01 % Max.
Volatile matter and Chlorides and Sulfates (as Na)	13% Max
Subsidiary colors	1 % Max
Heavy metals :	
Arsenic	< 3 ppm
Lead	< 10 ppm
Manganese	< 50 ppm
Chromium	< 50 ppm
Mercury	< 1 ppm
Cadmium	< 1 ppm

CHEMICAL & PHYSICAL PROPERTIES

Aspect	Reddish Brown powder
Maximum absorption	501 (+-5) nm
Fastness to acids	Good
Fastness to alcali	Moderate
Fastness to light	Relatively good

FIELDS OF USE : All water based cosmetic products such as skin care, hair care, toiletries