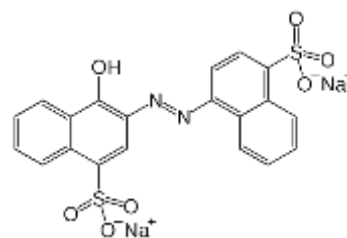


TECHNICAL DATA SHEET

Cosmetische kleurstof - waterbasis - rood donker / Cosmetic colorant - water based - red dark - KCW08

DEFINITION

Chemical Name	Disodium 4-hydroxy-3-(4-sulfonato-1-naphthylazo) naphthalene-1-sulfonate
INCI Name	CI 14720
COLOUR INDEX	14720
CAS Nr	3567-69-9
EINECS Nr	222-657-4



REGULATIONS

EU Cosmetic Directive	Annex IV, Part 1, Cat 1
Food Directive	E 122
FDA	-----
JAPAN	-----
CHINA	Hygienic Standard for Cosmetics, Cat 1

Pure dye content	85% Min.
Water/toluen insoluble matter	0.5% Max.
Volatile matter	15% Max.
Chlorides and sulfates (as Na salts)	3% Max.
Heavy metals :	
Arsenic	< 1 ppm
Lead	< 20 ppm
Manganese	< 50 ppm
Chromium	< 50 ppm
Mercury	< 1 ppm
Cadmium	< 1 ppm

CHEMICAL & PHYSICAL PROPERTIES

Aspect	Red powder
Maximum absorption	515 (+- 5) nm
Fastness to acids	Good
Fastness to alcali	Average
Fastness to light	Average

FIELDS OF USE : Water based cosmetic products such as skin care, hair care and toiletries