

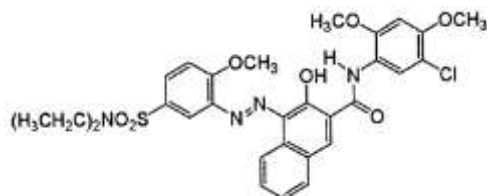
# TECHNICAL DATA SHEET

## Cosmetic colorant - Red - KCP06

### DEFINITION

Chemical Name *N*-(5-chloro-2,4-dimethoxyphenyl)-4-[[5-(diethylsulfamoyl)-2-methoxyphenyl]diazenyl]-3-hydroxynaphthalene-2-carboxamide

INCI Name CI 12490  
COLOUR INDEX 12490  
CAS Nr 6410-41-9  
EINECS Nr 229-107-2



### REGULATIONS

EU Cosmetic Directive Annex IV, Part 1, Cat 1  
FDA -----  
JAPAN -----  
CHINA Hygienic Standard for Cosmetics, Cat 1

### CHEMICAL & PHYSICAL PROPERTIES

<b>Aspect</b>	Bright red powder
<b>Pure dye content</b>	90% Min.
<b>Water insoluble matter</b>	0.5% Max.
<b>Synthesis intermediates :</b>	
3-Amino-N,N-diethyl-4-methoxybenzenesulfonamide	450 ppm Max.
3-Hydroxy-5'-chloro-2',4'-dimethoxy-2-naphthanilide	300 ppm Max.
<b>Heavy metals :</b>	
<b>Arsenic</b>	< 2 ppm
<b>Lead</b>	< 20 ppm
<b>Mercury</b>	< 1 ppm
<b>Cadmium</b>	< 1 ppm

**FIELDS OF USE :** Make up and toiletries products